

Congratulations!! You've been
appointed to the Solid Waste Authority

Now What?



§22C-4-4. Establishment of regional solid waste authorities authorized

(a) On and after January 1, 1989, any two or more counties within the same solid waste shed and with the approval of the solid waste management board, may establish a regional solid waste authority.



Solid Waste Authorities

- Local entities
 - Protect the public health and welfare by providing for a comprehensive program of solid waste collection, processing, recycling and disposal.
 - 50 Solid Waste Authorities.



Solid Waste Authority (cont.)

- County SWAs
 - Five member volunteer board
 - Department of Environmental Protection (1)
 - Public Service Commission (1)
 - Conservation District (1)
 - County Commission (2)



Solid Waste Authority (cont.)

- Regional SWAs
 - Department of Environmental Protection (1)
 - County Commissions (2 from each participating county)
 - Public Service Commission (1)
 - Soil Conservation Districts (1 from each region represented)
 - Municipal representative (2 from each participating county having one or more participating municipalities)



Duties & Powers

W.Va. Code §22C-4-23.

- Issue negotiable bonds and notes;
- Employ personnel to operate litter control, recycling and other solid waste programs;
- Cooperate with governments and the private sector in planning and policy aspects of litter control and solid waste management;



SWA duties and responsibilities (cont.)

- Prohibit the illegal dumping of solid waste;
- Enforce the mandatory disposal provision by referring to the DEP or other appropriate enforcement officials;
- Acquire, construct and operate solid waste facilities;

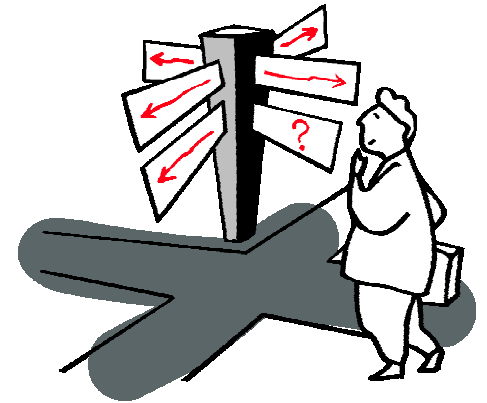


SWA duties and responsibilities (cont.)

- Promote and encourage source reduction, reuse and recycling activities;
- Identify and prioritize open dumps within the county or region;

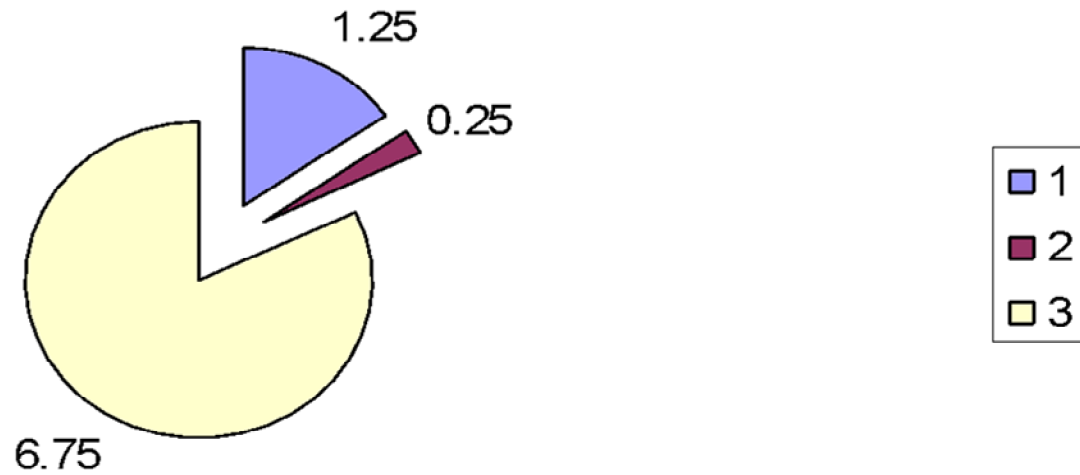
SWA duties and responsibilities (cont.)

- Develop Comprehensive Litter & Solid Waste Control Plan for their county and/or region;
- Develop a Recycling Plan as part of the Comprehensive Plan;
- Develop a Commercial Solid Waste Facility Siting Plan for their county and/or region.



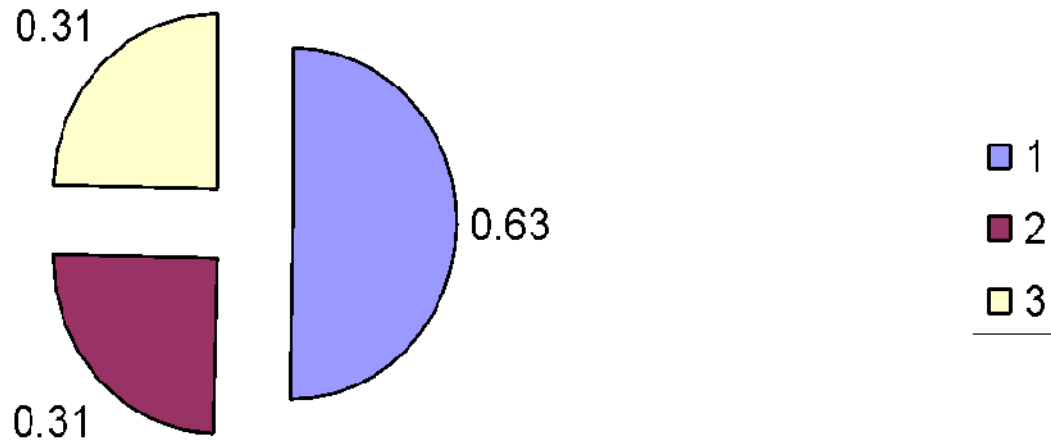
Funding

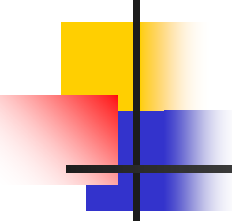
Solid Waste Assessment Fees



\$1.25

Distribution of \$1.25





W.Va. Code §7-5-22

Allows local solid waste authorities to impose a \$0.50 per ton assessment fee on waste deposited in commercial solid waste facilities in their respective counties.



New Funding

Effective July 1, 2021, an additional solid waste assessment fee shall be levied and imposed in the amount of 20 cents per ton, 40 cents per ton on July 1, 2022, 60 cents per ton beginning July 1, 2023, 80 cents per ton beginning July 1, 2024, and \$1.00 per ton beginning July 1, 2025, thereafter or like ratio on any part of a ton of solid waste. This fee is to be distributed:

1. 25% distributed among each county or regional solid waste authority; and
2. 75% distributed on a per capita basis to each county or regional solid waste authority based on the most recent population projections from the United States Census Bureau.



New Funding

<https://wvtreasury.com/Banking-Services/Revenue-Distributions/Solid-Waste-Management-Additional-Surcharge>





Planning

Comprehensive Litter and Solid Waste Control Plan

Commercial Solid Waste Facility Siting Plan

Comprehensive Litter & Solid Waste Control Plans

- The local authorities plan for managing municipal solid waste within their county and/or region.





The Process

<https://swmb.wv.gov/Solid-Waste-Authorities/Documents/Comp%20Plan%20Update%20Process.pdf>





Comprehensive Litter & Solid Waste Control Plans (cont.)

- Addresses 14 points
 - An assessment of litter and solid waste problems in the county.
 - The establishment of solid waste collection and disposal services for all county residents.
 - An evaluation of the feasibility of requiring or encouraging source separation to facilitate recycling and evaluation of the feasibility of requiring or encouraging waste reduction measures.



Comprehensive Litter & Solid Waste Control Plans (cont.)

- Establishment of an appropriate mandatory garbage disposal program.
- A recommendation for the siting of one or more properly permitted solid waste facilities to serve the solid waste needs of the county and/or region.
- A timetable for the implementation of the Comprehensive Plan.

Comprehensive Litter & Solid Waste Control Plan (cont.)

- A program for the cleanup, reclamation and stabilization of any open and unpermitted dumps.
- Coordination with related solid waste collection and disposal services of municipalities and, other counties, if applicable.
- A program to enlist the assistance of private industry and civic groups in volunteer cleanup efforts.



Comprehensive Litter & Solid Waste Control Plan (cont.)

- Innovative incentives to promote recycling.
- A program to identify the disposal of out of county or out of region solid waste.
- Coordination with the Department Of Environmental Protection, The Division of Highways and other agencies in the control and removal of litter, tires and open dumps.



Comprehensive Litter & Solid Waste Control Plan (cont.)

- Establishment of a program to encourage and utilize individuals incarcerated in the county jail and those individuals on probation for purposes of litter pickup.



- Provision for the proper disposal of commercial or industrial solid waste produced within the county or region.



Commercial Solid Waste Facility Siting Plans

Why is siting commercial solid waste facilities important?



The Process

<https://swmb.wv.gov/Solid-Waste-Authorities/Documents/Siting%20Plan%20Update%20Process.pdf>

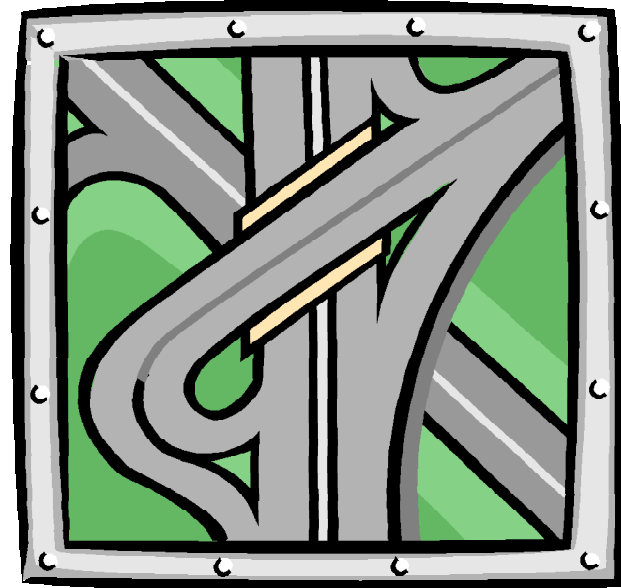
Commercial Solid Waste Facility Siting Plan

- Identifies zones within the county and/or region where commercial solid waste facilities are:
 - Authorized
 - Prohibited
 - Tentatively prohibited



Commercial Solid Waste Facility Siting Plan (cont.)

- Designation of zones based on 10 criteria
 - The efficient disposal of solid waste including all solid waste within the county and/or region.
 - Economic development.
 - Transportation facilities.
 - Property values.



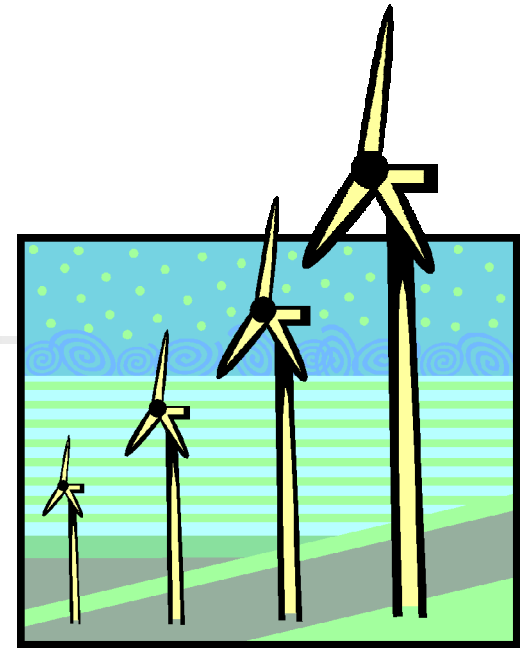
Commercial Solid Waste Facility Siting Plan (cont.)

- Groundwater and surface waters.
- Geological and hydrological conditions.
- Aesthetic and environmental quality.



Commercial Solid Waste Facility Siting Plan (cont.)

- The present and potential land uses for residential, commercial, recreational environmental conservation and industrial purposes.
- Historic and cultural resources.
- The public health, welfare and convenience.





You're not alone

WV Solid Waste Management Board

Administrative Guide

<https://swmb.wv.gov/Solid-Waste-Authorities/Administrative/Documents/Administrative%20Guide.pdf>